

Safety Tracker



Safety Inspections

Mobility...

In The Palm Of Your Hand!

Safety Tracker



Markets	Applications	Users
Coal Mining	SCSR Inspections	Safety Bosses
Open Pit Mining	PPE	Safety Coordinators
Strip Mining	Personnel	MSHA Inspectors
Highwall Mining	Food Stores	OSHA Inspectors
Mineral Mining	Safety Kits	OEM Repair Reps
Mining Equipment	Miner's Head Lights	
Oil/Gas	First Aid Kits	
Fire/Safety	Fire Extinguishers	
Search & Rescue		
Maritime		
Department of Defense		

Safety Tracker



Features:

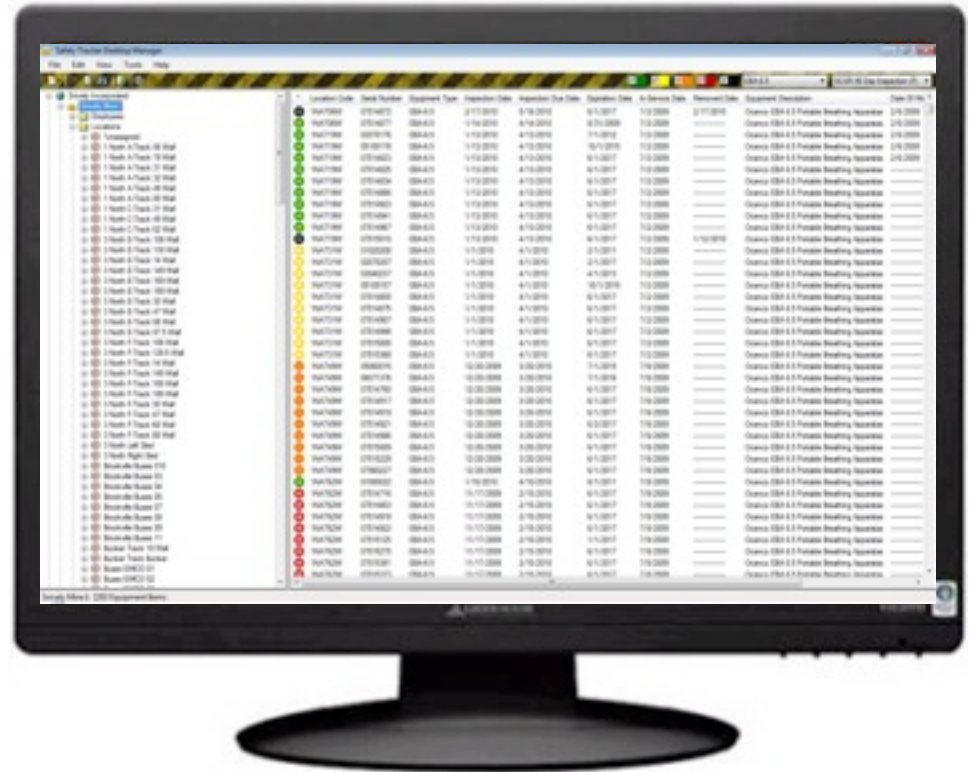
- **Replaces Manual Inspections:** Empowers you with mobile handheld device with automated tools to & capture inspection data - reducing manual errors and increasing efficiencies and productivity.
- **MSHA Compliancy Safety Data:** Safety tracker provides governmental (local, state and federal) compliancy data for Safety equipment.
- **Located Inventory:** Provides located serialized inventory by user-defined physical locations for instant inventory visibility and reporting.
- **Customizable Inspection Templates:** This is the most powerful tool in Safety Tracker which provides user's with the ability to create custom inspection scripts for any type of equipment.
- **Exceptional Rugged Construction:** Passes industry's most stringent drop and tumble tests; IP67 sealing rating; integrated internal antennas. Flexibility to use in nearly any environment; dramatically reduces repair and downtime costs.



Safety Tracker



Components:



Safety Tracker



Equipment Inventory by Location:

Location Code	Serial Number	Equipment Type	Inspection Date	Inspection Due Date	Expiration Date
● 1NAT19W	07014967	EBA-6.5	1/13/2010	4/13/2010	6/1/2017
● 1NAT19W	07015010	EBA-6.5	1/13/2010	4/13/2010	6/1/2017
● 1NAT31W	01020208	EBA-6.5	1/1/2010	4/1/2010	2/1/2011
● 1NAT31W	02070207	EBA-6.5	1/1/2010	4/1/2010	2/1/2017
● 1NAT31W	03040237	EBA-6.5	1/1/2010	4/1/2010	4/1/2013
● 1NAT31W	05100157	EBA-6.5	1/1/2010	4/1/2010	10/1/2015
● 1NAT31W	07014800	EBA-6.5	1/1/2010	4/1/2010	6/1/2017
● 1NAT31W	07014875	EBA-6.5	1/1/2010	4/1/2010	6/1/2017
● 1NAT31W	07014907	EBA-6.5	1/1/2010	4/1/2010	6/1/2017
● 1NAT31W	07014998	EBA-6.5	1/1/2010	4/1/2010	6/1/2017
● 1NAT31W	07015000	EBA-6.5	1/1/2010	4/1/2010	6/1/2017
● 1NAT31W	07015368	EBA-6.5	1/1/2010	4/1/2010	6/1/2017
● 1NAT49W	05060015	EBA-6.5	12/20/2009	3/20/2010	7/1/2015
● 1NAT49W	06071376	EBA-6.5	12/20/2009	3/20/2010	7/1/2016
● 1NAT49W	07014760	EBA-6.5	12/20/2009	3/20/2010	6/1/2017
● 1NAT49W	07014917	EBA-6.5	12/20/2009	3/20/2010	6/1/2017
● 1NAT49W	07014919	EBA-6.5	12/20/2009	3/20/2010	6/1/2017
● 1NAT49W	07014921	EBA-6.5	12/20/2009	3/20/2010	6/2/2017
● 1NAT49W	07014986	EBA-6.5	12/20/2009	3/20/2010	6/1/2017
● 1NAT49W	07015009	EBA-6.5	12/20/2009	3/20/2010	6/1/2017
● 1NAT49W	07015229	EBA-6.5	12/20/2009	3/20/2010	6/1/2017
● 1NAT49W	07060227	EBA-6.5	12/20/2009	3/20/2010	6/1/2017
● 1NAT62W	01080022	EBA-6.5	1/10/2010	4/10/2010	8/1/2011
● 1NAT62W	07014716	EBA-6.5	11/17/2009	2/15/2010	6/1/2017

➤ **Left Panel:** This display shows all locations for a specific site in alphabetical order.

➤ **Right Panel:** This display shows all serialized inventory and their inspection status.

- Past Due for Inspection
- Almost Past Due for Inspection
- Coming Due for Inspection
- Inspection Status Good
- Inspection Status Failed/Removed

Safety Tracker



Inspection Templates:

Inspection Template Properties Registration

Item	Response Type	Inspection Template
<input type="checkbox"/> View through clear case obstructed by scuffm		SCSR 90 Day Inspection (A) Pass/Fail Warn/Alert Days: 90 Days, 10, 5 Mark indicates: <input type="radio"/> Pass <input type="radio"/> Fail Yes indicates: <input type="radio"/> Pass <input type="radio"/> Fail Buttons: Add, Update, OK, Cancel, Apply
<input type="checkbox"/> Gauge pressure below 2500 psi or above 3200		
<input type="checkbox"/> No factory installed latch seals attached.		
<input type="checkbox"/> "U" seals open or rolled.		
<input type="checkbox"/> Case cracked, burned or deformed.		
<input type="checkbox"/> Mouthpiece plug (yellow rubber) not in place.		
<input type="checkbox"/> Loose parts...		
<input type="checkbox"/> Bottle pad (red rubber) cut or displaced.		
<input type="checkbox"/> Pressure gauge bent or indicator needle broke		
<input type="checkbox"/> Scrubber mounts bent.		
<input type="checkbox"/> Scrubber canister dented.		
<input type="checkbox"/> Dirt, debris or moisture in case.		
<input type="checkbox"/> Handle loop broken (the plastic loops that hold		
<input type="checkbox"/> One or both of the two handle straps (black ny		

Inspection Template Properties Registration

Serial No.: 06081001

- View through clear case obstructed
- Gauge pressure below 2500 psi or a
- No factory installed latch seals attac
- "U" seals open or rolled
- Case cracked, burned or deformed.
- Mouthpiece plug (yellow rubber) no
- Loose parts...

None

Snively Mine I
 Snively Mine II
 Snively Mine III

Safety Tracker



Inspection Process:



Sign-on:
Login/Password

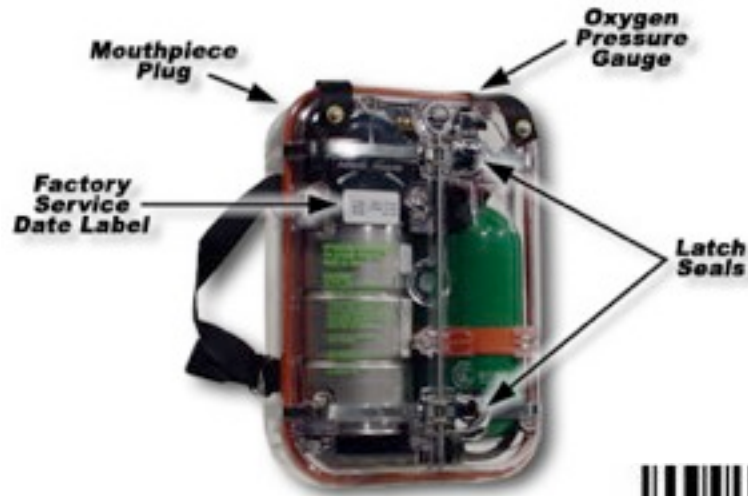


Press Inspection
Button

Safety Tracker



Inspection Process:



Select:

- Equipment Type
- Inspection Type
- Location

Press Select

Inspect & Scan all
Items in Location

Safety Tracker



Inspection Process:



Pull Out “Failed” or
“Unsafe” Assets
& Replace with New



Repeat with Other
Locations

Safety Tracker



Inspection Process:

Location	1NAT19W				1 North A-Track 19 Wall
Equipment Item	EBA-6.5	Ocenco EBA 6.5 Portable Breathing Apparatus			
Serial Number	Serial Number	Insp. Due Date	Pass/Fail	Expiration Date	Notes
	02070176	4/13/2010	()	7/1/2012	_____
	05100178	4/13/2010	()	10/1/2015	_____
	07014823	4/13/2010	()	6/1/2017	_____
	07014825	4/13/2010	()	6/1/2017	_____
	07014834	4/13/2010	()	6/1/2017	_____
	07014866	4/13/2010	()	6/1/2017	_____
	07014923	4/13/2010	()	6/1/2017	_____
	07014941	4/13/2010	()	6/1/2017	_____
	07014967	4/13/2010	()	6/1/2017	_____
	07015010	4/13/2010	()	6/1/2017	_____
_____			()		_____
_____			()		_____

For areas that require MSHA iSafe devices, an Inspection Template can be printed off from Excel to use during the Inspection of SCSR's in that area.

Safety Tracker



Inspection Process:



Once Inspections Are Completed...
Close Inspection Batch



To Transfer Handheld Data to the Desktop Application, Place the Handheld in the Dock and Select Data Sync

Safety Tracker



Reviewing Inspection History

Location Code	Serial Number	Equipment Type	Inspection Date	Pass/Fail	Equipment Description
1NAT06W	041002245	EBA-6.5	3/1/2010 3:25:03 PM	Pass	Ocenco EBA 6.5
1NAT06W	070148591	EBA-6.5	3/1/2010 3:24:51 PM	Pass	Ocenco EBA 6.5
1NAT06W	07014719	EBA-6.5	3/1/2010 3:24:05 PM	Fail	Ocenco EBA 6.5
1NAT06W	07014858	EBA-6.5	3/1/2010 3:23:58 PM	Pass	Ocenco EBA 6.5
1NAT06W	07014869	EBA-6.5	3/1/2010 3:23:38 PM	Pass	Ocenco EBA 6.5
1NAT06W	07014844	EBA-6.5	3/1/2010 3:23:36 PM	Pass	Ocenco EBA 6.5

Inspection Results

SCSR 90 Day Inspection (F)
(Fail)

- View through clear case obstructed by scuffmarks, stickers, etc.
- Gauge pressure below 2500 psi or above 3200 psi at 70°F.
- No factory installed latch seals attached.
- "U" seals open or rolled.
- Case cracked, burned or deformed.
- Mouthpiece plug (yellow rubber) not in place.

Loose parts...
None

- Bottle pad (red rubber) cut or displaced.

OK Cancel Apply

Review the Details of Your Inspection History by Location or for Your Entire Site

Safety Tracker



Reviewing Inspected Locations

*	Location Code	Serial Number	Equipment Type	Inspection Date	Inspection Due Date	Expiration Date	In-Service Date	Removed Date
●	1NAT06W	04100224	EBA-6.5	1/1/2009	4/1/2009	1/5/2009	7/2/1999	7/5/2009
●	1NAT06W	07014719	EBA-6.5	12/1/2009	3/1/2010	12/13/2009	7/2/2009	-----
●	1NAT06W	07014844	EBA-6.5	1/14/2010	4/14/2010	6/1/2017	7/2/2009	-----
●	1NAT06W	07014846	EBA-6.5	1/14/2010	4/14/2010	-----	7/2/2009	-----
●	1NAT06W	07014858	EBA-6.5	1/14/2010	4/14/2010	6/1/2017	7/2/2009	-----
●	1NAT06W	07014859	EBA-6.5	1/14/2010	4/14/2010	6/1/2017	7/2/2009	12/22/2009
●	1NAT06W	07014869	EBA-6.5	1/14/2010	4/14/2010	6/1/2017	7/2/2009	-----
●	1NAT06W	07014872	EBA-6.5	2/17/2010	5/18/2010	6/1/2017	7/2/2009	2/17/2010
●	1NAT06W	07014877	EBA-6.5	1/14/2010	4/14/2010	8/31/2009	7/2/2009	-----

On the Desktop or Handheld, Move Removed Items to a “Decommissioned” Location and Retain for MSHA Reporting

Safety Tracker



MSHA Quarterly Reporting

MSHA Quarterly Report

Site:

Equipment Type:

Reporting Date: From To

	A	B	C	D	E	F	G
	Mine_ID	Manufacturer	Manufact urer Date	Serial_N umber	Remove_Fr om Service	Remove_R eason	
1							
2	1234501	Ocenco EBA 6.5	6/1/2007	07014719	TRUE		
3	1234501	Ocenco EBA 6.5	6/1/2007	07014872	TRUE	Out of Date	
4							
5							
6							
7							
8							
9							
10							
11							

All SCSR's In or Out of Service
(Within a Specified Date Range)
Are Exported Directly Into the
MSHA Required Format

In Excel, Select "Save-As" and
Choose the Type CSV (Comma
Delimited) and E-mail Data Directly to
MSHA

Safety Tracker Desktop Manager

File Edit View Tools Help

<All Equipment Types> <All Inspection Templates>

Snively Incorporated

Tools

Inspection Templates

- Work Order Template
- Continuous Miner Inspection
- Fire Extn
- Regulator Inspection
- SCSR 90 Day Inspection (A)
- SCSR 90 Day Inspection (D)
- SCSR 90 Day Inspection (F)
- SCSR 90 Day Inspection (P)
- Test

Equipment Types

Employees

Work Order Template

1 Days (Detailed)

Work Order No.

Raised Date
Thursday, March 18, 2010

Raised Time

Standard Job
MSHA

Print Job Card
OGLH01

Equip. Ref.
PMMNG4-MINER, CONTINUOUS #64 (IDLE 11-17-08)

Originator
611817 McKinney

Work Group
OMGM

Priority
A IMMEDIATE

Work Order Type
MA-MAINTENANCE

Maintenance Type
AD-ADMINISTRATION

Componet Code
CU00 CUTTER BAR ASSEMBLY

Modifier Code
LO-LOWER

Assigned To

611817 McKinney

Task Job Instructions

Task Safety Instructions

SI- Safety Code Description

Task Job Description

50-Job Code Description

Date Completed
Thursday, March 18, 2010

Completion Code
C-Completion Code Description

Enter Task Requisition

View Recursions

Save/Submit

8 Sites

Customized Data Entry Templates for Mobile Data Collection

Safety Tracker



Sample: Work Order Information

Detailed Inspection

SafetyTracker

Done Cancel

Serial No.: 07014844

Standard Job

None Desc.

SAFETY STATE

ADHOC

MSHA

Work Group

<Select:>

Originator Priority

Detailed Inspection

SafetyTracker

Done Cancel

Serial No.: 07014844

Standard Job

MSHA

Work Order Desc.

Input of WO Description

Equipmt. Ref.

OMBU12-SHUTTLE CAR #12 S/N ET168

Work Group

OSGM

Originator Priority

Develop Custom Interfaces to Use Data Collected by Workers, in the Mine, to Create Work Orders in the Back End Systems, Avoiding Hand Written Forms and Keyed Entry